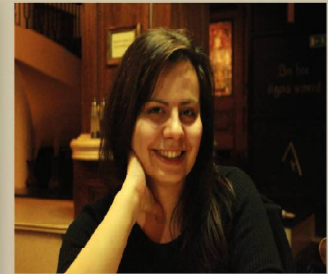




NIKOLETTA SKORDAKI, ESR14

ENVIRONMENTAL FACTORS IN DIGITAL CULTURAL HERITAGE

- Study of the long-term environmental factors and their influence on the built Cultural Heritage
- Study of the decay processes
- Examination of materials physicochemical properties
- Assessment of the environment's impact to buildings' structure



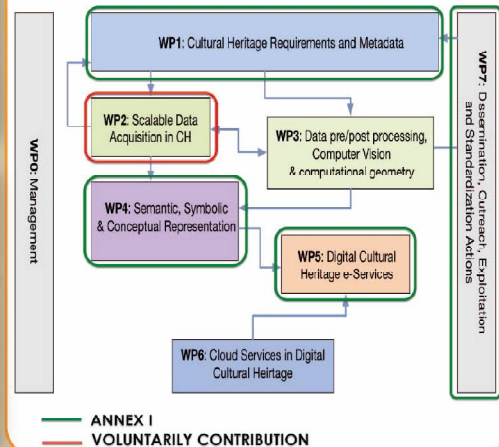
SCIENTIFIC BACKGROUND

- Chemical Engineer, School of Chemical Engineering, National Technical University of Athens (NTUA), Greece
- MSc 'Mathematical Modeling in Modern Technologies and Financial Engineering', School of Applied Mathematical and Physical Sciences, NTUA, Greece
- MSc 'Protection of monuments Direction: Materials and maintenance intervention', School of Architecture, NTUA, Greece

FIRST YEAR OF FELLOWSHIP



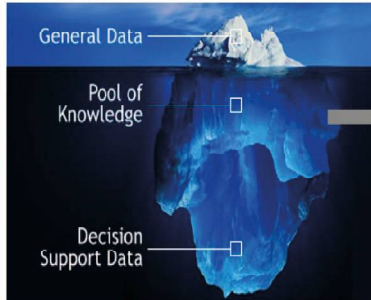
WORKPACKAGES INVOLVEMENT



LONG TERM ENVIRONMENTAL FACTORS' CATEGORIES

The categorization is based on the EU-Chic project (<http://www.eu-chic.eu>)

EU-CULTURAL IDENTITY CARD - CHICBERG



ENVIRONMENTAL RISKS	
A	LONG TERM INFLUENCES
A1	Bio attack
A2	Climate conditions fluctuations
A3	Aeolic impact
A4	Water (Ground, Atmospheric)
A5	Solar radiation
A6	Particle matter & aerosols
A7	Long term loading
A8	Geological conditions (including local particularities)

ACTIVITIES

- Survey of long-term environmental impact on built Cultural Heritage
- Submission of paper regarding the survey on **CIPA 25th International Symposium 2015, Taipei, 31 August-4 September 2015**
- Investigation of the environment of Asinou Church's area, Cyprus
- Submission of an abstract regarding the environmental impact at Asinou Church, at **SEAHA Conference, University College London, 14-15 July 2015**
- Editing of e-book concerning Asinou Church



Home Country



Host Country



Jamova cesta 2
1000 Ljubljana
<http://www.3.tgg.uni-lj.si>

Host Organization

